



Mini Mod Dress



This sewing pattern is designed for stretch materials only, such as knit, French terry, knit velour and so on. The pockets may be sewn from a non-stretch material, however.

Cut all pieces with an additional seam allowance. Stitch all seams with a serger overcast stitch or with a stretch stitch on a conventional machine.



Stitch the two hood pieces along the crown fabric right sides together. Fold over the hood face seam allowance twice and press. Stitch the hood face seam with a stretch stitch.

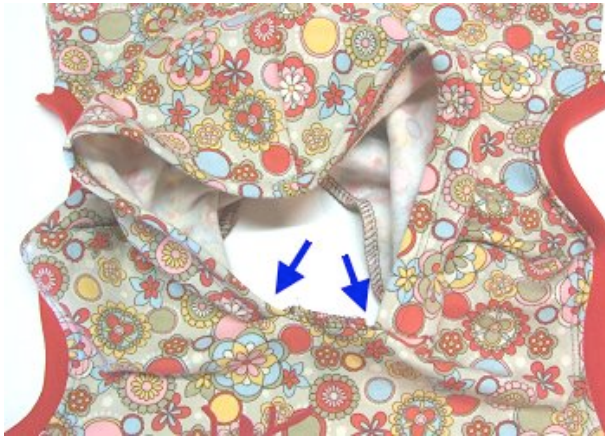


Stitch the shoulder seams right sides together.



Press the ribbing material for the armholes in half lengthwise. Stitch the material for the armholes right fabric sides together. Stretch the ribbing material gently as you stitch, so the material lays nicely when worn.

Press the seam allowance toward the garment inside and topstitch with a stretch stitch.



Pin the hood at the marks on the neckline. Stitch the hood to the bodice with a stretch stitch.



Secure the stress points of the corners with bar tacks.

Nahtzugaben in den Halsausschnitt klappen und knappkantig absteppen.



Stitch the side seams right sides together. Hem the dress.

All done!

Mod Tunic with Pocket



The tunic can be sewn with exposed seams when using non-raveling material. In that case, you do not need to add an additional seam allowance along the neckline and armhole.



Stitch one shoulder seam. Finish the edge of the neckline with an overcast overlock stitch.



Stitch the second shoulder seam. Finish the edges of the armhole with an overcast overlock stitch.



Stitch one side seam and finish the hem edge.

Stitch the opposite side seam.

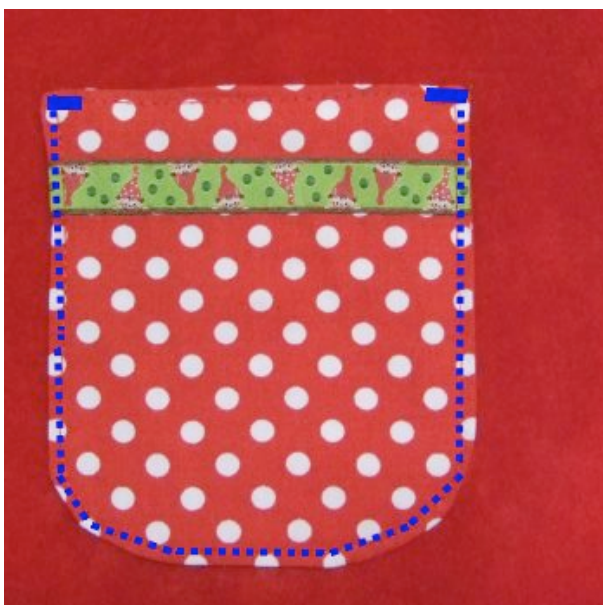


Stitch the two pocket pieces right sides together. Leave a small opening in the top edge in the stitching line for turning.

Trim the seam allowance and notch the corners.



Turn the pocket right side out through the opening and press. Edgestitch along the top of the pocket. (Note: Add any trim BEFORE stitching the two pocket pieces together).



Pin the pocket on the garment and stitch to the garment. Secure the stress points on the pocket corners with bar tacks.

All done!