

Delightful Dress MADITA

These instructions are just one method and sequence for constructing MADITA. Please use your preferred sewing and construction methods.



Cut all pieces according to the piece list with respect to the grain.

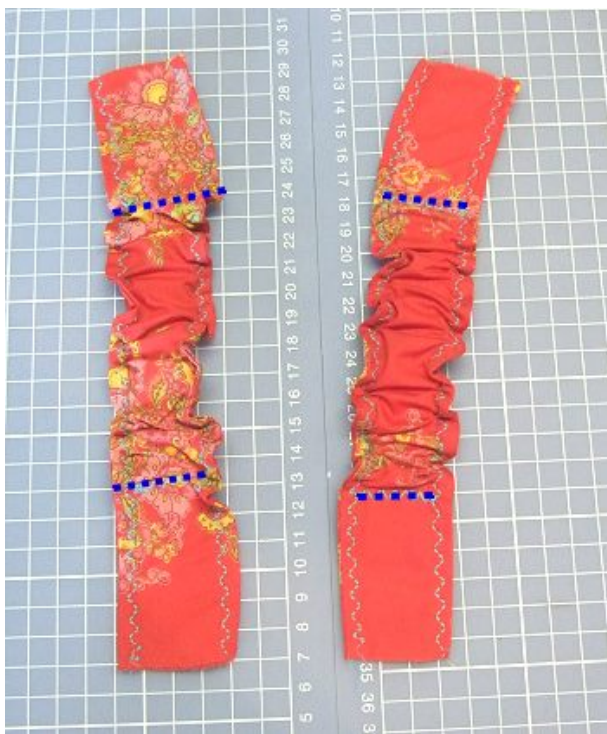
Finish all piece edges against raveling with an overcast stitch.



Stitch the shoulder strap pieces fabric right sides together along the long edges. Trim the seam allowances to reduce bulk in the seams.



Turn the straps right side out and press. Edgestitch along the long edges.



With the aid of a safety pin or bodkin, insert elastic into the shoulder straps. Secure the ends of the elastic at the marks. One method to secure the elastic pieces in the right place within the strap is to pin one end of the elastic in place and stitch securely.

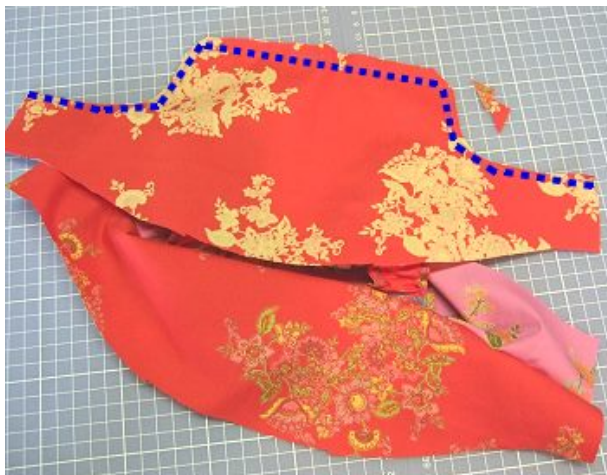
Push the material of the strap along the piece of elastic until the opposite end of the elastic reaches the mark. Pin the opposite the end of the elastic at the mark and stitch securely in place.



Pin the strap pieces to the bodice front pointing downward, right sides together, and baste stitch in place. Make sure the longer curved edge of the strap is laying toward the inside of the dress.



Baste stitch the opposite ends of the straps to the opposite bodice piece. Check to make sure the straps are correctly placed and adjust if necessary.



Pin the bodice lining piece on the bodice outer+strap piece and stitch the lining to the bodice outer along the top edge. You will thereby secure one end of the straps between the two layers.

Trim the seam allowance and notch the corners to reduce bulk in the seam. Repeat for the opposite bodice piece.

You will have at this juncture the bodice front and back connected with the straps in between.



Pull the front and back bodice pieces apart and pin the side seams and stitch in one motion. Press the seam allowances open.



Turn the bodice right side out and press along the top edge. Topstitch along the top edges of the bodice and along the edges of the armscythes.



For a child with a thinner build or for a little extra fit, you may want to stitch along the marks under the arms.



In the resulting casings, insert elastic, cinch to the desired fit and secure the ends.



Stitch the front hem piece to the front main dress piece. Press the seam allowance down and topstitch from the right side.

Repeat for the back hem piece and back main dress piece.



Stitch the front main dress piece to the back main dress piece right sides together along the side seams.

Press the seam allowances open and topstitch along both sides of the seam from the garment right side.



Pin the main dress piece to the bodice right sides together and stitch. Press the seam allowance upward and topstitch from the garment right side.

Tip: If you find that the main dress piece does not fit the bodice piece, run a basting stitch along the top edge of the main dress piece (or the bodice, if the bodice is too large) and ease to fit the main dress piece to the bodice.



Hem the dress.

MADITA is complete!

Farbenmix sewing patterns are for private, home use only. Single sewn examples of the designs sewn on a single machine by a private, individual seamstress/seamster may be sold to a private, individual buyer. No sale to retail for resale of the sewn design. No mass production. A design may be sewn a maximum number of 20 times for resale. No sale of the sewn design permitted without attribution to the design coutier (Sabine Pollehn, Farbenmix). Farbenmix and its affiliates assume no liability for possible errors in the sewing pattern or instructions. Purchase and/or sewing of the design constitutes agreement to the Terms of Sewing Pattern Use.